



## ELISA for Quantitative Determination of Rat IgE

### Introduction

The CellTrend IgE(rat)-ELISA is designed for the quantitative determination of rat IgE in complex samples (serum or other biological samples).

### Principle of the Assay

The determination of rat IgE is carried out as direct sandwich ELISA. An antibody specific for rat IgE has been pre-coated onto a microplate. Standards and samples are pipetted into the wells and any IgE present is bound. After washing away any unbound substances, an enzyme-linked antibody is added. Following a wash, a substrate solution is added to the wells and color develops in proportion to the amount of antibody conjugate. The absorption at 450 nm is proportional to the IgE concentration.

### Performance Characteristics

*Standard curve:*

6 standards between 1.56 ng/ml and 50 ng/ml

*Sensitivity:*

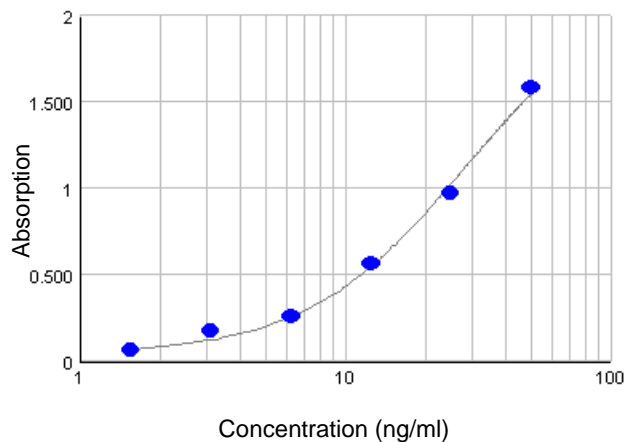
15.6 ng/ml (sample dilution 1:10)

*Sample materials:*

Protein solutions

For Research use only

### Typical Standard Curve



### Assay Procedure

Incubation of samples/standards	100 µl/well	2 hrs with shaking
Wash		
Incubation of detection antibody	100 µl/well	2 hrs with shaking
Wash		
Substrate incubation	100 µl/well	20 min, room temperature
Add stop solution	100 µl/well	
Read at 450 nm		

### Order informations

Product	Catalog number	Price (€)
ELISA for Quantitative Determination of IgE (rat), 1x96 determinat.	52600	490.-
Contract analysis: Determination of IgE (rat)		please inquire

### Related products

Product	Catalog number	Price (€)
ELISA for Quantitative Determination of IgG (rat), 1x96 determinat.	52300	490.-
ELISA for Quantitative Determination of IgA (rat), 1x96 determinat.	52400	490.-
ELISA for Quantitative Determination of IgM (rat), 1x96 determinat.	52500	490.-
Contract analysis		please inquire