



ELISA for Quantitative Determination of Pig IgA

Introduction

The CellTrend IgA(pig)-ELISA is designed for the quantitative determination of pig IgA in complex samples (serum or other biological samples).

Principle of the Assay

The determination of pig IgA is carried out as direct sandwich ELISA. An antibody specific for pig IgA has been pre-coated onto a microplate. Standards and samples are pipetted into the wells and any IgA present is bound. After washing away any unbound substances, an enzyme-linked antibody is added. Following a wash, a substrate solution is added to the wells and color develops in proportion to the amount of antibody conjugate. The absorption at 450 nm is proportional to the IgA concentration.

Performance Characteristics

Standard curve:

7 standards between 15.6 ng/ml and 1000 ng/ml

Sensitivity:

156 ng/ml (sample dilution 1:10)

Sample materials:

Protein solutions

Intraassay precision (CV):

(n=10)

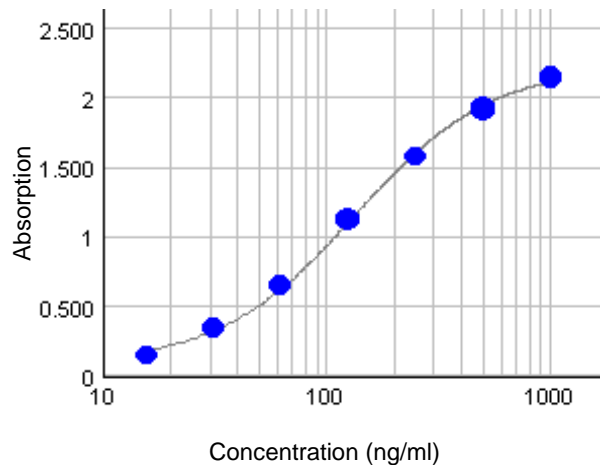
at 25 ng/ml: 6.6%

at 100 ng/ml: 4.3%

at 237 ng/ml: 7.9%

For Research use only

Typical Standard Curve



Assay Procedure

Incubation of samples/standards	100 µl/well	1 hr with shaking or 2 hrs without shaking
Wash		
Incubation of detection antibody	100 µl/well	1 hr with shaking or 2 hrs without shaking
Wash		
Substrate incubation	100 µl/well	10 min, room temperature
Add stop solution	100 µl/well	
Read at 450 nm		

Order informations

Product	Catalog number	Price (€)
ELISA for Quantitative Determination of IgA (pig), 1x96 determinat.	53200	490.-
Contract analysis: Determination of IgA (pig)		please inquire

Related products

Product	Catalog number	Price (€)
ELISA for Quantitative Determination of IgG (pig), 1x96 determinat.	53100	490.-
ELISA for Quantitative Determination of IgM (pig), 1x96 determinat.	53300	490.-
Contract analysis		please inquire