



ELISA for Quantitative Determination of Bovine IgG

Introduction

The CellTrend IgG (bovine)-ELISA is designed for the quantitative determination of bovine IgG in complex samples. Main application of the assay is to monitor purification of protein preparations (e.g. monoclonal antibodies) if bovine or calf serum has been used in the production process.

Principle of the Assay

The determination of bovine IgG is carried out as direct sandwich ELISA. An antibody specific for bovine IgG has been pre-coated onto a microplate. Standards and samples are pipetted into the wells and any IgG present is bound. After washing away any unbound substances, an enzyme-linked antibody is added. Following a wash, a substrate solution is added to the wells and color develops in proportion to the amount of antibody conjugate. The absorption at 450 nm is proportional to the IgG concentration.

Performance Characteristics

Standard curve:

7 standards between 3.125 ng/ml and 200 ng/ml

Sensitivity:

15.6 ng/ml (sample dilution 1:5)

Sample materials:

Protein solutions

Intraassay precision (CV):

(n=12)

at 35 ng/ml: 2.9%

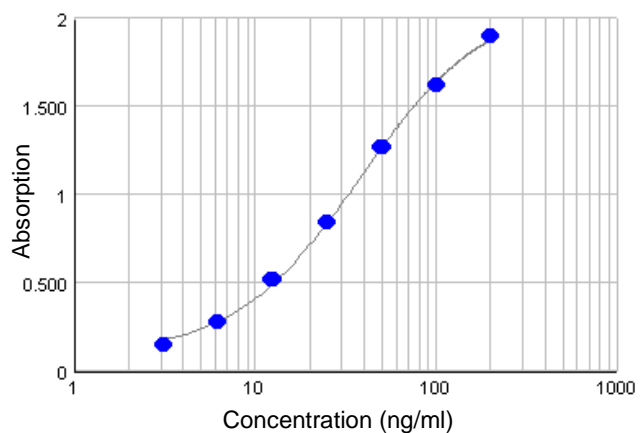
at 112 ng/ml: 5.4%

Cross reactivities:

IgG (mouse) <0.1%

For Research use only

Typical Standard Curve



Assay Procedure

Incubation of samples/standards	100 µl/well	1 hr with shaking or 2 hrs without shaking
Wash		
Incubation of detection antibody	100 µl/well	1 hr with shaking or 2 hrs without shaking
Wash		
Substrate incubation	100 µl/well	15 min, room temperature
Add stop solution	100 µl/well	
Read at 450 nm		

Order informations

Product	Catalog number	Price (€)
ELISA for Quantitative Determination of IgG (bovine), 1x96 determ.	51200	490.-
Contract analysis: Determination of IgG (bovine)		please inquire

Related products

Product	Catalog number	Price (€)
ELISA for Quantitative Determination of BSA, 1x96 determinations	50300	490.-
Contract analysis: Determination of BSA		please inquire