



EIA for Quantitative Determination of anti-Endothelin Receptor B (ETB)-Antibodies

Introduction

Endothelins (ET) are 21-amino acid vasoconstricting peptides produced primarily in the endothelium having a key role in vascular homeostasis. It mediates the effects through G-Protein-coupled receptors, the Endothelin receptors. There are two key receptor types, ET_A and ET_B. ETB is primarily located on the endothelial cells that line the interior of the blood vessels. When endothelin binds to ETB receptors, this leads to the release of nitric oxide, diuresis and mechanisms that lower blood pressure. The CellTrend anti-Endothelin Receptor B Antibody-EIA is designed for the determination of antibodies (IgG) against the Endothelin receptor subtype B in serum and plasma.

Principle of the assay

The CellTrend anti-Endothelin Receptor B-Antibody-EIA is an antibody screening test. Endothelin-receptor B has been pre-coated onto a microtiter plate. During the first incubation the anti-Endothelin receptor B-Antibodies of the samples are immobilised on the plate. The autoantibodies are detected with a POD labeled anti-human IgG antibody. In the following enzymatic substrate reaction the intensity of the colour correlates with the concentration and/ or avidity of anti-Endothelin receptor B-antibody.

Performance Characteristics

Standard curve:

5 standards between 2.5 U/ml and 40 U/ml

cut off:

-

Sample materials:

Serum, Plasma

Intraassay-Precision:

(n=8)

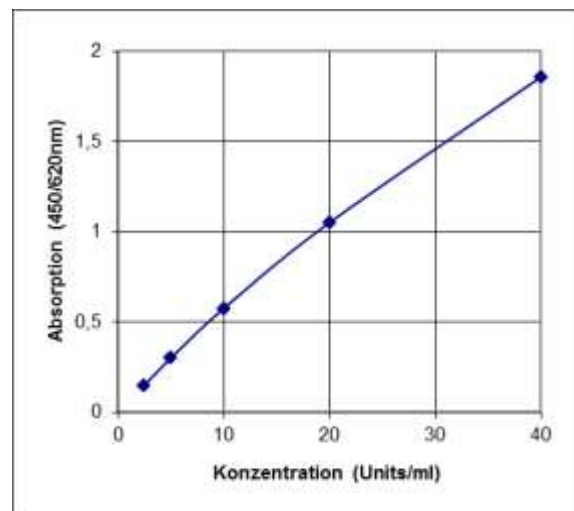
Probe 1 (21.2 U/ml):4.4%

Interassay-Precision:

(n=20)

20.1 U/ml: 3.7%

Typical Standard Curve



Assay Procedure

Incubation of samples/ standards/ controls	100 µl	2 hrs, 4°C
Wash		
Incubation of detection antibody	100 µl	1 hr, room temperature
Wash		
Substrate incubation	100 µl/well	20 min, room temperature
Add Stopp solution	100 µl/well	
Read at 450nm		

Order informations

Product	Catalog number	Price (€)
EIA for Quantitative Determination of anti-ETR-B-Ab, 1x96 determ.	13300	950,-