



## EIA for Quantitative Determination of anti-Endothelin Receptor A (ETA)-IgG-Antibodies (Mouse)

### Introduction

Endothelins (ET) are 21-amino acid vasoconstricting peptides produced primarily in the endothelium having a key role in vascular homeostasis. It mediates the effects through G-Protein-coupled receptors, the Endothelin receptors. There are two key receptor types, ET<sub>A</sub> and ET<sub>B</sub>. ETA receptors are found in the smooth muscle tissue of blood vessels where they increase vasoconstriction by ET-1.

The CellTrend anti-Endothelin Receptor A IgG-Antibody-EIA (Mouse) is designed for the determination of antibodies (IgG) against the Endothelin receptor subtype A in serum and plasma.

### Principle of the assay

The CellTrend anti-Endothelin Receptor A-IgG-Antibody-EIA (Mouse) is an antibody screening test. Endothelin- receptor A has been pre-coated onto a microtiter plate. During the first incubation the anti-Endothelin receptor A-IgG-Antibodies of the samples are immobilised on the plate. The autoantibodies are detected with a POD labeled anti-mouse IgG antibody. In the following enzymatic substrate reaction the intensity of the colour correlates with the concentration and/ or avidity of anti-Endothelin receptor A-IgG-antibody (mouse).

### Performance Characteristics

*Standard curve:*

6 standards between 1.25 U/ml and 40 U/ml

*cut off:*

-

*Sample materials:*

Serum, Plasma

*Intraassay-Precision:*

(n=10)

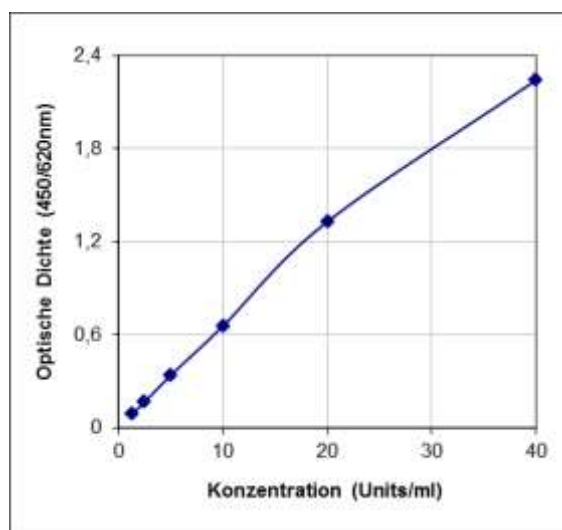
Probe 1 (20.8 U/ml):7.5%

*Interassay-Precision:*

(n=8)

20.1 U/ml: 6.7%

### Typical Standard Curve



### Assay Procedure

Incubation of samples/ standards/ controls	100 µl	2 hrs, 4°C
Wash		
Incubation of detection antibody	100 µl	1 hr, room temperature
Wash		
Substrate incubation	100 µl/well	20 min, room temperature
Add Stopp solution	100 µl/well	
Read at 450nm		

### Order informations

Product	Catalog number	Price (€)
EIA for Quant. Determin. of anti-ETR-A-IgG-Ab (Mouse), 1x96 determ.	55800	950.-

### Related products

Product	Catalog number	Price (€)
EIA for Quant. Determin. of anti-AT1-IgG-Ab (Mouse), 1x96 determ.	55700	950.-

