



## EIA for Quantitative Determination of anti-CXCR-3-Antibodies

### Introduction

Chemokine receptor CXCR3 is a Gai protein-coupled receptor in the CXC chemokine receptor family. Other names for CXCR3 are G protein-coupled receptor 9 (GPR9) and CD183. There are two variants of CXCR3: CXCR3-A binds to CXCL9 (MIG), CXCL10 (IP-10), and CXCL11 (I-TAC) whereas CXCR3-B bind to CXCL4, CXCL9, CXCL10, and CXCL11.

The occurrence of autoantibodies against CXCR-3 receptor is associated with an increased risk of immunologic disorders and arteriosclerosis.

The CellTrend anti-CXCR-3-antibody-EIA is designed for the determination of Antibodies (IgG) against the CXCR-3 in serum and plasma.

### Principle of the test

The CellTrend anti-CXCR-3-antibody-EIA is an antibody screening test. The CXCR-3-receptor has been pre-coated onto a microtiter plate. During the first incubation the anti-CXCR-3-antibodies of the samples are immobilised on the plate. The auto-antibodies are detected with a POD labeled anti-human IgG antibody. In the following enzymatic substrate reaction the intensity of the colour correlates with the concentration and/ or avidity of anti-CXCR-3-antibodies.

### Performance Characteristics

#### Standard curve:

6 standards between 1.25 U/ml and 40 U/ml

#### cut off:

12 U/ml positive, 6 U/ml at risk

<6 U/ml (Normalspender)

#### Sample materials:

Serum, Plasma

#### Intraassay-Precision:

(n=10)

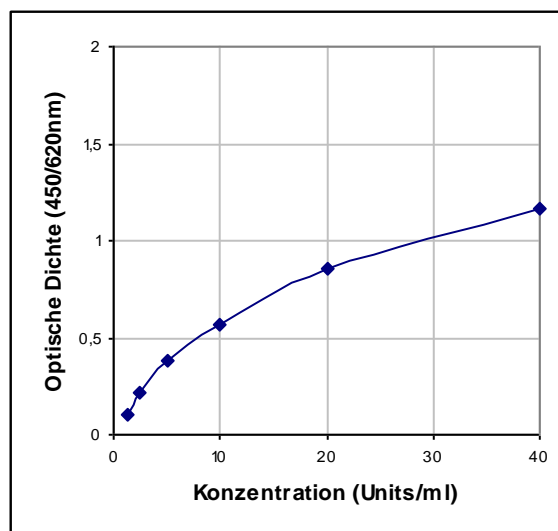
Sample 1 (14.2 U/ml): 4.7%

#### Interassay-Precision:

(n=20)

Sample 1 (14.8 U/ml): 6.1%

### Typical Standard Curve



### Assay Procedure

Incubation of samples/ standards/ controls	100 µl	120 min, 4°C
Wash		
Incubation of detection antibody	100 µl	1 hr, room temperature
Wash		
Substrate incubation	100 µl/well	0.5 hr, room temperature
Add Stopp solution	100 µl/well	
Read at 450nm		

### Bestellinformationen

Produkt	Bestell-Nummer	Preis (€)
EIA zur quantitativen Bestimmung von anti-CXCR-3-Ak, 1x96 Best.	12900	950.-