



# EIA for Quantitative Determination of anti- $\alpha$ 2-adrenergic-Receptor-Antibodies

## Introduction

The  $\alpha$ -2 adrenergic receptor is a G protein-coupled receptor. It consists of three highly homologous subtypes, including  $\alpha_{1A}$ -,  $\alpha_{1B}$ -, and  $\alpha_{1D}$ -adrenergic.

The CellTrend anti- $\alpha$ 2-adrenergic-receptor-antibody-EIA is designed for the determination of Antibodies (IgG) against the  $\alpha$ 2-adrenergic-receptor in serum and plasma.

## Performance Characteristics

*Standard curve:*

5 standards between 2,5 U/ml and 40 U/ml

*cut off:*

15 U/ml

*Sample materials:*

Serum, Plasma

*Intraassay-Precision:*

9,12%

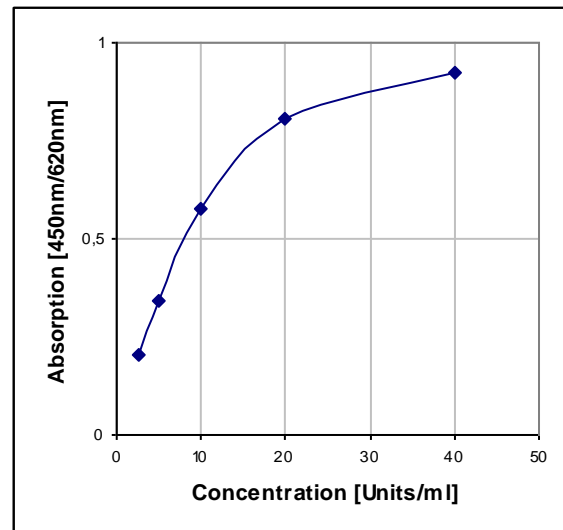
*Interassay-Precision:*

13,44%

## Principle of the test

The CellTrend anti- $\alpha$ 2-adrenergic-receptor-antibody-EIA is an antibody screening test. The  $\alpha$ 2-adrenergic-receptor has been pre-coated onto a microtiter plate. During the first incubation the anti- $\alpha$ 2-adrenergic-receptor-antibodies of the samples are immobilised on the plate. The auto-antibodies are detected with a POD labeled anti-human IgG antibody. In the following enzymatic substrate reaction the intensity of the colour correlates with the concentration and/ or avidity of anti- $\alpha$ 2-adrenergic-receptor-antibodies.

## Typical Standard Curve



## Assay Procedure

Incubation of samples/ standards/ controls	100 $\mu$ l	120 min, 4°C
Wash		
Incubation of detection antibody	100 $\mu$ l	1 hr, room temperature
Wash		
Substrate incubation	100 $\mu$ l/well	20 min, room temperature
Add Stopp solution	100 $\mu$ l/well	
Read at 450nm		

## Order informations

Product	Catalog number	Price (€)
EIA for Quantitative Determination of anti- $\alpha$ 2 AR AA, 1x96 determ.	12500	950,-

Ⓒ *In vitro*-Diagnostikum