



EIA for Quantitative Determination of anti-Angiotensin II Receptor 1 (AT1)-IgG-Antibodies (rat)

Introduction

Angiotensin II is a peptide hormone which causes vasoconstriction, increased blood pressure, and release of aldosterone from the adrenal cortex. It occupies an important role in the Renin-Angiotensin-System (RAS). Angiotensin II mediates the effects through G-Protein-coupled receptors, the Angiotensin receptors. The occurrence of autoantibodies against AT1 receptor is associated with an increased risk of an immunologic rejection after an organ transplantation. The presence of AT1 autoantibodies correlate with the existence and course of Skleroderma.

The CellTrend anti-Angiotensin receptor 1-Antibody EIA (IgG, rat) is designed for the determination of rat antibodies (IgG) against the Angiotensin II receptor subtype I in serum and plasma.

Principle of the assay

The CellTrend anti-Angiotensin II receptor 1-IgG-Antibody-EIA (rat) is an antibody screening test. Angiotensin II Receptor has been pre-coated onto a microtiter plate. During the first incubation the rat anti-Angiotensin II receptor 1-IgG-Antibodies of the samples are immobilised on the plate. The autoantibodies are detected with a POD labeled anti-rat IgG antibody. In the following enzymatic substrate reaction the intensity of the colour correlates with the concentration and/ or avidity of anti-Angiotensin II receptor 1-antibody (IgG)

Performance Characteristics

Standard curve:

6 standards between 1.25 U/ml and 40 U/ml

cut off:

-I

Sample materials:

Serum, Plasma

Intraassay-Precision:

(n=10)

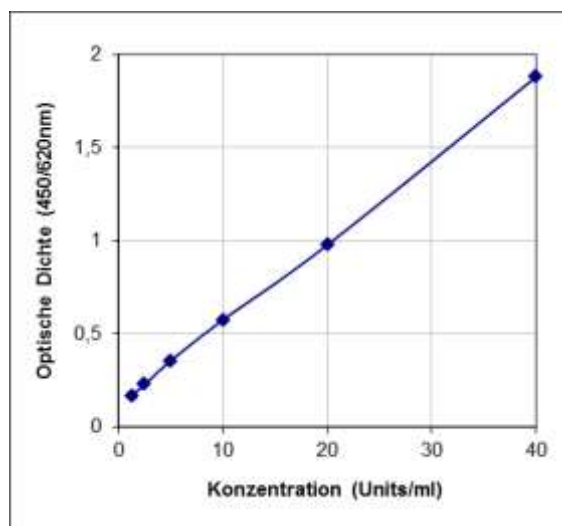
Sample 1 (14.5 U/ml): 7,8%

Interassay-Precision:

(n=20)

Sample 1 (11.4 U/ml): 6.4%

Typical Standard Curve



Assay Procedure

Incubation of samples/ standards/ controls	100 µl	2 hrs, 4°C
Wash		
Incubation of detection antibody	100 µl	1 hr, room temperature
Wash		
Substrate incubation	100 µl/well	20 min, room temperature
Add Stopp solution	100 µl/well	
Read at 450nm		

Order informations

Product	Catalog number	Price (€)
EIA for Quantitative Determination of anti-AT1-AB (IgG, rat), 1x96	52700	950.-